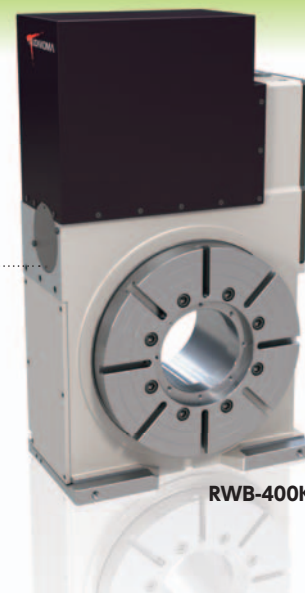


For horizontal machining centers

RWB-K

RWB-250K•320K•400K•500K

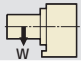
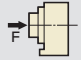
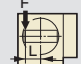
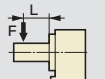
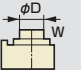
Flagship model with highest-class specifications exclusively for horizontal machining centers. A popular for the aircraft, automobile and cutting tool industries. A larger through-bore size enables more ports number of rotary joint than previous model. New dual-face plate spec. is now available. Workpieces can be clamped on both the front and back, allowing for the processing of two workpieces in a single setup. This innovative design significantly enhances productivity, making it ideal for machining symmetrical workpieces.


RWB-400K

Specifications

Values in [] in the specifications are for RWB-***K,DF dual-face plate spec.

Unit: mm

		RWB-250K	RWB-320K	RWB-400K	RWB-500K
Table diameter		φ 250	φ 320	φ 400	φ 500
Center height		160	210	255	310
Center bore	Nose diameter	φ 105H7【φ 40H7】	φ 150H7【φ 65H7】	φ 200H7【φ 75H7】	φ 220H7【φ 100H7】
	Through-bore	φ 80【φ 30】	φ 120【φ 55】	φ 160【φ 65】	φ 181【φ 90】
Table T-slot width		12H7	14H7	14H7	18H7
Guide block width		18h7	18h7	18h7	18h7
Servo motors(for FANUC)		α iF8	α iF12	α iF12	α iF12
Inertia converted into motor shaft	×10 ⁻³ kg·m ²	1.27【1.35】	3.53【3.57】	4.63【4.75】	4.25【4.34】
Net weight	kg	130【160】	250【305】	370【470】	590【730】
Speed reduction ratio		1/90	1/120	1/120	1/180
Table max. rpm	min ⁻¹ (Motor rpm: 2,000min ⁻¹)	22.2	16.6	16.6	11.1
Indexing accuracy (the sum)	arcsec	14	14	14	14
Clamp system		Hydraulic or air-hydraulic(Option)	Hydraulic or air-hydraulic(Option)	Hydraulic or air-hydraulic(Option)	Hydraulic or air-hydraulic(Option)
Clamp torque ／Supplied pressure	N·m	1,300【1,300】/3.5MPa 2,000【1,300】/4.9MPa	3,100【3,100】/3.5MPa 4,700【3,500】/4.9MPa	5,500【5,500】/3.5MPa 8,000【6,700】/4.9MPa	7,600【7,600】/3.5MPa 11,000【7,900】/4.9MPa
Allowable work weight	*1 Vertical setting  kg	175	250	300	600
	Vertical setting(with tailstock)	350	500	600	1,200
	Vertical setting (with SSB)	900	1,500	1,800	3,600
Allowable load (when table is clamped)	F  N	35,000	89,000	109,000	240,000
	F×L  N·m	1,300【1,300】/3.5MPa 2,000【1,300】/4.9MPa	3,100【3,100】/3.5MPa 4,700【3,500】/4.9MPa	5,500【5,500】/3.5MPa 8,000【6,700】/4.9MPa	7,600【7,600】/3.5MPa 11,000【7,900】/4.9MPa
	F×L  N·m	1,500	5,300	7,800	17,000
*1 Allowable work inertia	$J=\frac{W \cdot D^2}{8}$  kg·m ²	7	19	36	112

CE correspondence model

*1 In the case of dual-face plate spec., the total value of dual-face plate is shown.

For tables with a diameter of 800 or more, please order a big bore type of the following models:

Tables diameter	Model	Center bore	Specifications
φ 800	RCV-800 (Motor mounted on top)	φ 360	P.32
φ 1000	RCV-1000 (Motor mounted on top)	φ 410	P.32
φ 1250	RCV-1250 (Motor mounted on top)	φ 500	P.32

Tech.Info.

Servo motors of other manufacturers **P.70**

Option

High-precision Spec.

(Dual-face plate spec. not supported) **P.66**

Pull Stud

(Dual-face plate spec. not supported) **P.68**

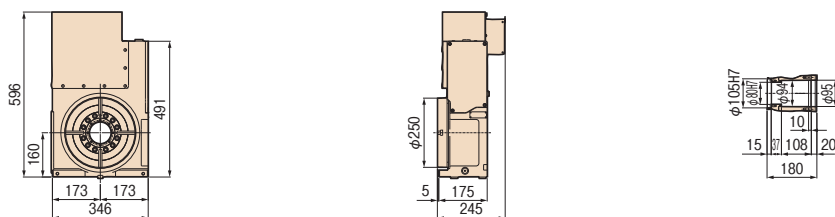
Rotary Joint **P.27 • P.68**

Air-hydraulic Booster **P.69**

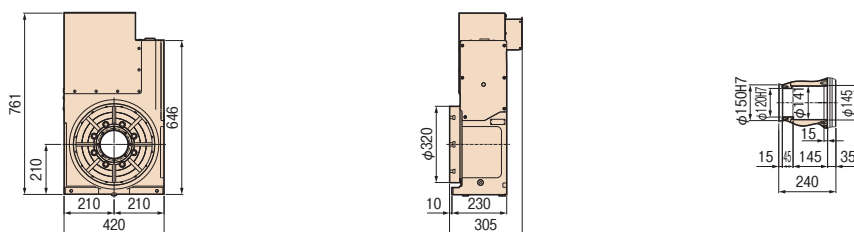
Dimensions

Unit: mm

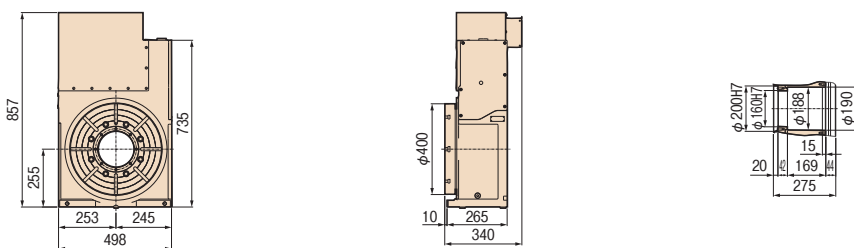
RWB-250K



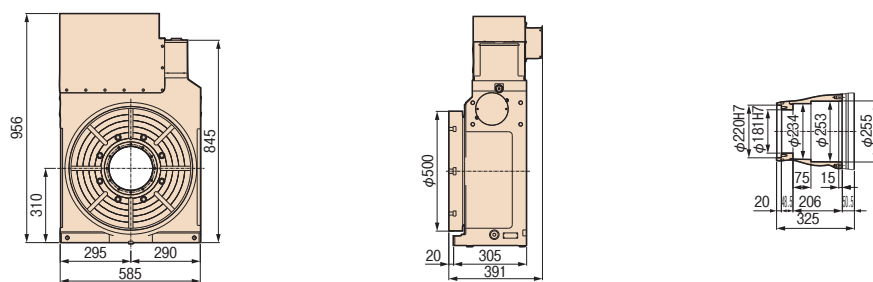
RWB-320K



RWB-400K



RWB-500K



Note: The above dimensions are for FANUC servo motors. The dimensions of servo motors of other manufacturers may be larger.

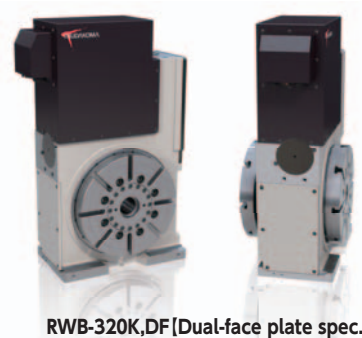
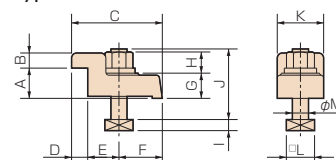
Clamping block and bolt

Unit: mm

	Type	Q'ty	T-slot pitch	T-slot width	A	B	C	D	E	F	G	H	I	J	K	L	M
RWB-250K	I	4	50 to 125	18	25	12	80	12	33	35	22	21	11	65	40	28	16
RWB-320K	I	4	73 to 162	18	30	15	90	16	31	43	25	21	11	70	46	28	16
RWB-400K	I	4	73 to 160	18	30	15	90	16	31	43	25	21	11	70	46	28	16
RWB-500K	I	4	73 to 200	18	40	20	110	18	42	50	25	21	11	70	46	28	16

Note: When using a machine with a T-slot pitch other than the above, use suitable clamping blocks and bolts that are available on the market, or order custom-made ones from TSUDAKOMA. (Option)

Type I



Option Rotary Joint

Internal mount type	Max.number of ports	
	Standard	Dual-face plate
RWB-250K	10+ 1	Contact us
RWB-320K	12+ 1	6
RWB-400K	16+ 1	6
RWB-500K	16+ 1	8

* Please contact us for clamping torque and other details regarding dual-face plate + rotary joint specifications.

* The number of ports for dual-face plate spec. cannot be changed.



RBS

RBH

RBM

TBS

RWE/RWA
RN

RWH

RWA-B

RWB

RWB-K

RCB

RCH

RCV

Multi-Spindle
RWM

TWA/TN

TWS

TWB

Multi-Spindle
TWM

RDS

TDS
TDB

NC Controllers

Accessories

Options

Technical
Information